



Flight Plan & Site Survey

Created using **RPAS Wilco®**

Operation Name:	Timmins Golden Hawks
Pilot Name:	[REDACTED]
Pilot Certificate:	[REDACTED]
Flight Start:	May 18, 2023 2:49 PM
Flight End:	May 18, 2023 4:49 PM
Flight Area (Latitude):	48° 26' 36.70" N (48.444)
Flight Area (Longitude):	81° 15' 41.60" W (-81.262)
Altitude - Radius:	Alt: 600 ft - Rad: 926.0 m (0.5 nm)
Airspace:	UNCONTROLLED
FIR - Contact:	CZYZ - 905-676-4509

Please ensure you received all required authorizations prior to flight.

Disclaimer

This Site Survey was created using RPAS Wilco by AIM Robotics. The flight plan contained is intended only for RPAS flights on the date/time and location specified. The user accepts all responsibility for the accuracy and completeness of the information contained.

For the complete Terms & Conditions, see

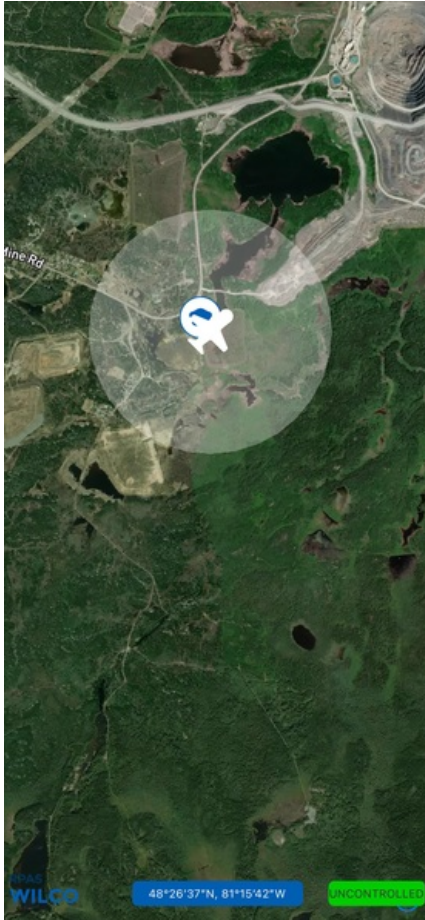
<https://rpaswilco.com/#/tnc>

Included



- Site Survey
- Obstacles (if available)
- Nearby Aerodromes
- Canadian Aviation Regulations
- GFA
- Aerodrome Supplements
 - METAR & TAF (if available)
 - NOTAMS
 - CFS



Flight Map

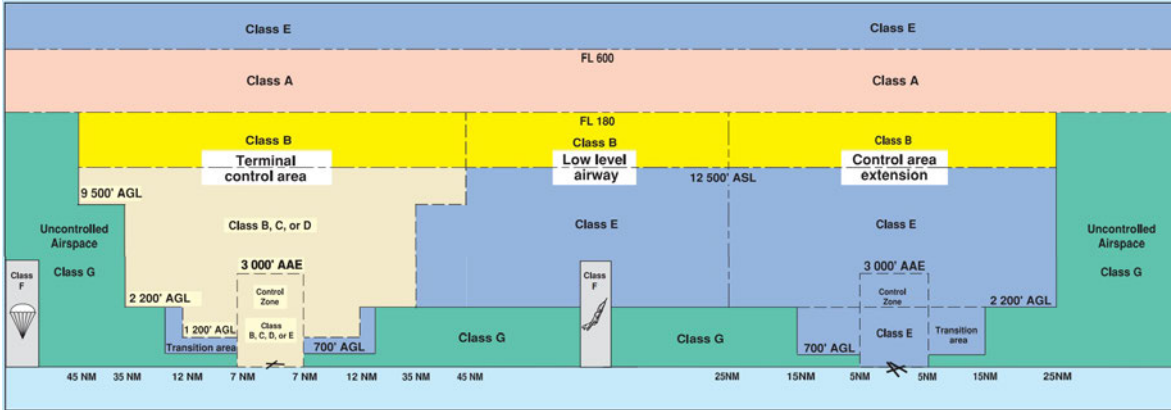


MAP Details

		Latitude	Longitude
	MODEL	48° 26' 36.70" N (48.444)	81° 15' 41.60" W (-81.262)
	Pilot	48° 26' 40.30" N (48.4445)	81° 15' 45.20" W (-81.2626)



Airspace Classification



Overlying Airspaces

Class	Name	Floor	Ceiling
E	Timmins, ON TA	700AGL	12500MSL
B	Timmins, ON TA	12500MSL	18000MSL
B	V13 Airway	12500MSL	18000MSL
E	V13 Airway	2200AGL	12500MSL
E	T656 Airway	2200AGL	12500MSL
B	T656 Airway	12500MSL	18000MSL
E	T745 Airway	2200AGL	12500MSL
B	T745 Airway	12500MSL	18000MSL
E	Timmins, ON CAE	2200AGL	12500MSL
B	Timmins, ON CAE	12500MSL	18000MSL

Nearest Aerodromes & Distance from Operation

TIMMINS (TIMMINS AND DISTRICT HOSP) (CTM6 HELIPORT Cert)	Lat: 48.487	Long: 81.313	6.144 KM	3.32 NM
TIMMINS (VICTOR M. POWER) (CYTS AERODROME Cert)	Lat: 48.571	Long: 81.376	16.492 KM	8.9 NM
IROQUOIS FALLS (CNE4 AERODROME Reg)	Lat: 48.741	Long: 80.793	47.766 KM	25.79 NM

Canadian Aviation Regulations

Division III — General Operating and Flight Rules

For full listing please visit <https://laws-lois.justice.gc.ca/eng/regulations/SOR-96-433/FullText.html#s-901.27>

Visual Line-of-sight

- **901.11 (1)** Subject to subsection (2) no pilot shall operate a remotely piloted aircraft system unless the pilot or a visual observer has the aircraft in visual line-of-sight at all times during flight.
- **(2)** A pilot may operate a remotely piloted aircraft system without the pilot or a visual observer having the aircraft in visual line-of-sight if the operation is conducted in accordance with a special flight operations certificate — RPAS issued under section 903.03.

Procedures

- **901.23 (1)** No pilot shall operate a remotely piloted aircraft system unless the following procedures are established:
 - **(a)** normal operating procedures, including pre-flight, take-off, launch, approach, landing and recovery procedures; and
 - **(b)** emergency procedures, including with respect to
 - **(i)** a control station failure,
 - **(ii)** an equipment failure,
 - **(iii)** a failure of the remotely piloted aircraft,
 - **(iv)** a loss of the command and control link,
 - **(v)** a fly-away, and
 - **(vi)** flight termination.
- **(2)** If the manufacturer of the remotely piloted aircraft system provides instructions with respect to the topics referred to in paragraphs (1)(a) and (b), the procedures established under subsection (1) shall reflect those instructions.
- **(3)** No pilot shall conduct the take-off or launch of a remotely piloted aircraft unless the procedures referred to in subsection (1) are reviewed before the flight by, and are immediately available to, each crew member.
- **(4)** No pilot shall operate a remotely piloted aircraft system unless the operation is conducted in accordance with the procedures referred to in subsection (1).

Site Survey

901.27 No pilot shall operate a remotely piloted aircraft system unless, before commencing operations, they determine that the site for take-off, launch, landing or recovery is suitable for the proposed operation by conducting a site survey that takes into account the following factors:

- **(a)** the boundaries of the area of operation;
- **(b)** the type of airspace and the applicable regulatory requirements;
- **(c)** the altitudes and routes to be used on the approach to and departure from the area of operation;
- **(d)** the proximity of manned aircraft operations;
- **(e)** the proximity of aerodromes, airports and heliports;
- **(f)** the location and height of obstacles, including wires, masts, buildings, cell phone towers and wind turbines;
- **(g)** the predominant weather and environmental conditions for the area of operation; and
- **(h)** the horizontal distances from persons not involved in the operation.

Operations at or in the Vicinity of an Aerodrome, Airport or Heliport

- **901.47 (1)** No pilot shall operate a remotely piloted aircraft at or near an aerodrome that is listed in the *Canada Flight Supplement* or the *Water Aerodrome Supplement* in a manner that could interfere with an aircraft operating in the established traffic pattern.
- **(2)** Subject to section 901.73 no pilot shall operate a remotely piloted aircraft at a distance of less than
 - **(a)** three nautical miles from the centre of an airport; and
 - **(b)** one nautical mile from the centre of a heliport.
- **(3)** No pilot shall operate a remotely piloted aircraft at a distance of less than three nautical miles from the centre of an aerodrome operated under the authority of the Minister of National Defence unless the operation is conducted in accordance with a special flight operations certificate — RPAS issued under section 903.03.

Records

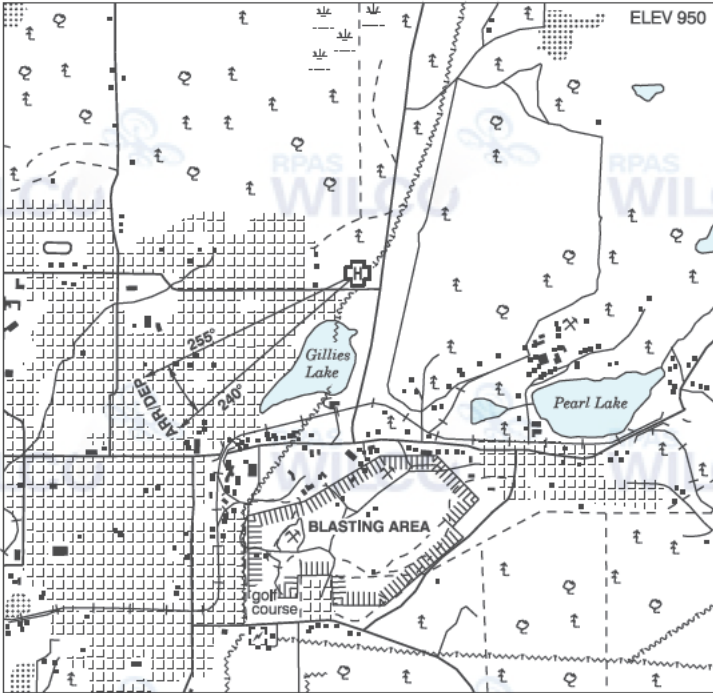
- **901.48 (1)** Every owner of a remotely piloted aircraft system shall keep the following records:
 - **(a)** a record containing the names of the pilots and other crew members who are involved in each flight and, in respect of the system, the time of each flight or series of flights and
 - **(b)** a record containing the particulars of any mandatory action and any other maintenance action, modification or repair performed on the system, including
 - **(i)** the names of the persons who performed them,
 - **(ii)** the dates they were undertaken,
 - **(iii)** in the case of a modification, the manufacturer, model and a description of the part or equipment installed to modify the system, and
 - **(iv)** if applicable any instructions provided to complete the work.
- **(2)** Every owner of a remotely piloted aircraft system shall ensure that the records referred to in subsection (1) are made available to the Minister on request and are retained for a period of
 - **(a)** in the case of the records referred to in paragraph (1)(a), 12 months after the day on which they are created; and
 - **(b)** in the case of the records referred to in paragraph (1)(b), 24 months after the day on which they are created.
- **(3)** Every owner of a remotely piloted aircraft system who transfers ownership of the system to another person shall, at the time of transfer, also deliver to that person all of the records referred to in paragraph (1)(b).

ONTARIO

AERODROME/FACILITY DIRECTORY

TIMMINS (TIMMINS & DISTRICT HOSP) ON (Heli)

CTM6



REF	N48 29 13 W81 18 49 Adj NE 11°W UTC-5(4) Elev 950' A5009
OPR	Timmins and District Hospital 705-267-2131 Cert PPR
FLT PLN	
FIC	London 866-WXBRIEF (Toll free within Canada) or 866-541-4104 (Toll free within Canada & USA)
HELI DATA	86' dia ASPH 114' dia Max heli overall length 57.5'
RCR	Opr
LIGHTING	RF(FL)
COMM	
MF	Timmins rdo 122.3 5NM 4000 ASL centered on Timmins aprt 5.6NM NNW (CAR 602.98)
PRO	Arr/dep 240°-255° fr heli, slope 8% (H3), day/night use.
CAUTION	Blasting ops aprx 0.9NM S of A/D up to 1486 ASL refer to Timmins VTPC, ctc London rdo.

ONTARIO

AERODROME/FACILITY DIRECTORY

TIMMINS (VICTOR M. POWER) ON

CYTS

REF	N48 34 14 W81 22 36 6NNW 11°W UTC-5(4) Elev 968' A5009 LO4 LO7 HI4 CAP	
OPR	City of Timmins 705-360-2636 10-03Z± Nov 1-Apr 30 1100-2130Z± Mon-Fri exc hols, 13-16Z± Sat-Sun & hols May 1-Oct 31 Cert Ldg fees	
PF	B-1,2,3,6 C-4,5	
FLT PLN	Pilots to open/close VFR flt plan with London rdo FISE or by phone.	
FIC	London 866-WXBRIEF (Toll free within Canada) or 866-541-4104 (Toll free within Canada & USA)	
WX	METAR H24. TAF H24, issue times: 02, 08, 14, 20Z.	
SERVICES		
FUEL	100LL, JA-1 (FSII avbl), HPR 10-01Z± Mon-Fri, 1130-2400Z± Sat-Sun O/T 1 hr PN 705-360-8888	
OIL	All	
S	1, 2, 3	
SUP FL	D-ice 705-264-9521 Air Creebec	
JASU	10/15	
MIL CON	World Fuel Services 705-264-9521	
RWY DATA	Rwy 03(031°)/21(211°) 6000x150 ASPH Rwy 10(101°)/28(281°) 4907x150 ASPH	
RWY CERT	Rwy 03/21 AGN IV Rwy 10/28 AGN IV	
TWY CERT	Twy C AGN II	
RCR	Opr RSC/CRFI & Win maint avbl 10-03Z± O/T 4 hrs PN, call out chg. PLR/PCN	
LIGHTING	03-AN(TE HI) P2, 21-AO(TE HI) P2, 10-AO(TE ME) P2, 28-AO(TE ME) P2	
COMM		
RADIO	122.3 (E) (emerg only 705-264-6009)	
RCO	London rdo 123.55 (FISE) 126.7 (bcst)	
ATIS	124.95	
MF	rdo 122.3 5NM 4000 ASL (CAR 602.98)	
PAL	Toronto Ctr 128.3	
NAV		
VOR/DME	YTS 113.0 Ch 77 N48 34 19 W81 22 12 (996')	
ILS	ITS 109.7 (Rwy 03) RVR LOC reliable only wi hin 10° either side of centreline.	
PRO	Turn around bay on Thld 21 not to be used for holding. Non-sked and tran acft park on N Ramp.	
CAUTION	Blasting ops SE of A/D up to 1486 MSL refer to VTPC, ctc London rdo. Porcupine Lake ATF area adj SE (ltd hrs 123.3 O/T 122.8 5NM 2000 ASL). Extv bird & wildlife activity in vic A/D.	

ONTARIO

AERODROME/FACILITY DIRECTORY

IROQUOIS FALLS ON

CNE4

REF	N48 44 25 W80 47 36 5WSW 11°W (2013) UTC-5(4) Elev 1004' A5009 LO4 LO7
OPR	Town 705-232-8921 Reg
PF	B-1 C-2,3,4,5 D-6
FLT PLN	FIC London 866-WXBRIEF (Toll free within Canada) or 866-541-4104 (Toll free within Canada & USA)
RWY DATA	Rwy 14(137°)/32(317°) 3988x100 GRASS, centre 75' ASPH.
RCR	Opr
LIGHTING	14-(TE ME) AP, 32-(TE ME) AP ARCAL-122.8 type K
COMM	ATF UNICOM 1330-23Z± O/T tfc 122.8 5NM 4000 ASL

